

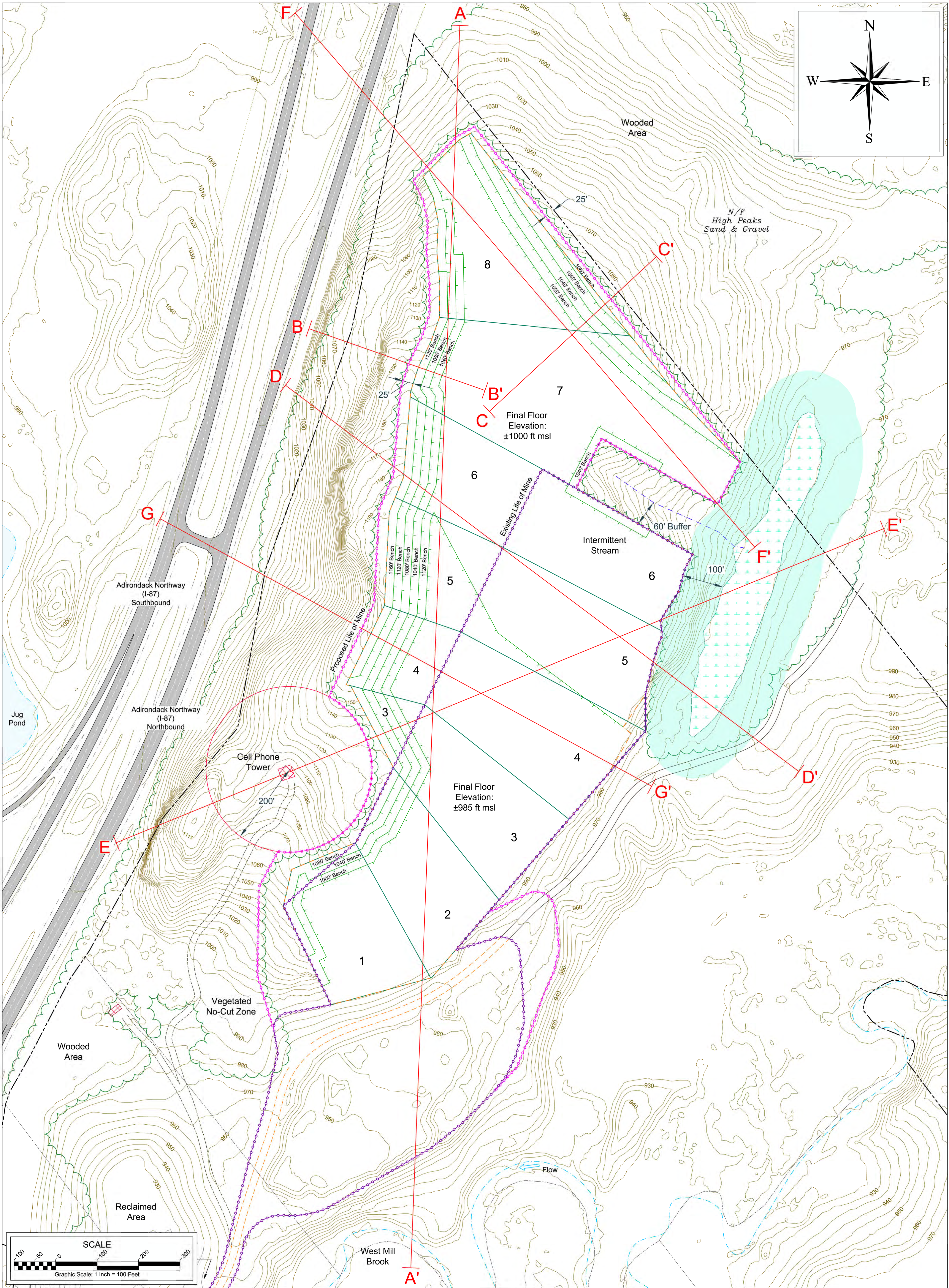
NOTES

- Site topography derived from high resolution (1 meter) bare-earth digital elevation model (DEM) generated by the NYS Geospatial Services in 2019 (<https://gis.ny.gov/nys-dem>)
- Inset map at the same scale as the main map

**Haul Road & LOM Continue North
As Shown In the Main Map**

The map shows a proposed haul road and LOM continuation (indicated by a dashed line) running north-south through the LORRING MITCHELL BASIN. The road is bordered by a purple line with circular markers. The map includes contour lines (e.g., 930, 940, 950, 960, 970, 980, 990, 1000, 1010, 1020, 1030, 1040, 1050, 1060, 1070, 1080, 1090, 1100, 1110, 1120, 1130, 1140, 1150, 1160, 1170, 1180, 1190, 1200, 1210, 1220, 1230, 1240, 1250, 1260, 1270, 1280, 1290, 1300, 1310, 1320, 1330, 1340, 1350, 1360, 1370, 1380, 1390, 1400, 1410, 1420, 1430, 1440, 1450, 1460, 1470, 1480, 1490, 1500, 1510, 1520, 1530, 1540, 1550, 1560, 1570, 1580, 1590, 1600, 1610, 1620, 1630, 1640, 1650, 1660, 1670, 1680, 1690, 1700, 1710, 1720, 1730, 1740, 1750, 1760, 1770, 1780, 1790, 1800, 1810, 1820, 1830, 1840, 1850, 1860, 1870, 1880, 1890, 1900, 1910, 1920, 1930, 1940, 1950, 1960, 1970, 1980, 1990, 2000, 2010, 2020, 2030, 2040, 2050, 2060, 2070, 2080, 2090, 2100, 2110, 2120, 2130, 2140, 2150, 2160, 2170, 2180, 2190, 2200, 2210, 2220, 2230, 2240, 2250, 2260, 2270, 2280, 2290, 2300, 2310, 2320, 2330, 2340, 2350, 2360, 2370, 2380, 2390, 2400, 2410, 2420, 2430, 2440, 2450, 2460, 2470, 2480, 2490, 2500, 2510, 2520, 2530, 2540, 2550, 2560, 2570, 2580, 2590, 2600, 2610, 2620, 2630, 2640, 2650, 2660, 2670, 2680, 2690, 2700, 2710, 2720, 2730, 2740, 2750, 2760, 2770, 2780, 2790, 2800, 2810, 2820, 2830, 2840, 2850, 2860, 2870, 2880, 2890, 2900, 2910, 2920, 2930, 2940, 2950, 2960, 2970, 2980, 2990, 3000, 3010, 3020, 3030, 3040, 3050, 3060, 3070, 3080, 3090, 3100, 3110, 3120, 3130, 3140, 3150, 3160, 3170, 3180, 3190, 3200, 3210, 3220, 3230, 3240, 3250, 3260, 3270, 3280, 3290, 3300, 3310, 3320, 3330, 3340, 3350, 3360, 3370, 3380, 3390, 3400, 3410, 3420, 3430, 3440, 3450, 3460, 3470, 3480, 3490, 3500, 3510, 3520, 3530, 3540, 3550, 3560, 3570, 3580, 3590, 3600, 3610, 3620, 3630, 3640, 3650, 3660, 3670, 3680, 3690, 3700, 3710, 3720, 3730, 3740, 3750, 3760, 3770, 3780, 3790, 3800, 3810, 3820, 3830, 3840, 3850, 3860, 3870, 3880, 3890, 3900, 3910, 3920, 3930, 3940, 3950, 3960, 3970, 3980, 3990, 4000, 4010, 4020, 4030, 4040, 4050, 4060, 4070, 4080, 4090, 4100, 4110, 4120, 4130, 4140, 4150, 4160, 4170, 4180, 4190, 4200, 4210, 4220, 4230, 4240, 4250, 4260, 4270, 4280, 4290, 4300, 4310, 4320, 4330, 4340, 4350, 4360, 4370, 4380, 4390, 4400, 4410, 4420, 4430, 4440, 4450, 4460, 4470, 4480, 4490, 4500, 4510, 4520, 4530, 4540, 4550, 4560, 4570, 4580, 4590, 4600, 4610, 4620, 4630, 4640, 4650, 4660, 4670, 4680, 4690, 4700, 4710, 4720, 4730, 4740, 4750, 4760, 4770, 4780, 4790, 4800, 4810, 4820, 4830, 4840, 4850, 4860, 4870, 4880, 4890, 4900, 4910, 4920, 4930, 4940, 4950, 4960, 4970, 4980, 4990, 5000, 5010, 5020, 5030, 5040, 5050, 5060, 5070, 5080, 5090, 5100, 5110, 5120, 5130, 5140, 5150, 5160, 5170, 5180, 5190, 5200, 5210, 5220, 5230, 5240, 5250, 5260, 5270, 5280, 5290, 5300, 5310, 5320, 5330, 5340, 5350, 5360, 5370, 5380, 5390, 5400, 5410, 5420, 5430, 5440, 5450, 5460, 5470, 5480, 5490, 5500, 5510, 5520, 5530, 5540, 5550, 5560, 5570, 5580, 5590, 5600, 5610, 5620, 5630, 5640, 5650, 5660, 5670, 5680, 5690, 5700, 5710, 5720, 5730, 5740, 5750, 5760, 5770, 5780, 5790, 5800, 5810, 5820, 5830, 5840, 5850, 5860, 5870, 5880, 5890, 5900, 5910, 5920, 5930, 5940, 5950, 5960, 5970, 5980, 5990, 6000, 6010, 6020, 6030, 6040, 6050, 6060, 6070, 6080, 6090, 6100, 6110, 6120, 6130, 6140, 6150, 6160, 6170, 6180, 6190, 6200, 6210, 6220, 6230, 6240, 6250, 6260, 6270, 6280, 6290, 6300, 6310, 6320, 6330, 6340, 6350, 6360, 6370, 6380, 6390, 6400, 6410, 6420, 6430, 6440, 6450, 6460, 6470, 6480, 6490, 6500, 6510, 6520, 6530, 6540, 6550, 6560, 6570, 6580, 6590, 6600, 6610, 6620, 6630, 6640, 6650, 6660, 6670, 6680, 6690, 6700, 6710, 6720, 6730, 6740, 6750, 6760, 6770, 6780, 6790, 6800, 6810, 6820, 6830, 6840, 6850, 6860, 6870, 6880, 6890, 6900, 6910, 6920, 6930, 6940, 6950, 6960, 6970, 6980, 6990, 7000, 7010, 7020, 7030, 7040, 7050, 7060, 7070, 7080, 7090, 7100, 7110, 7120, 7130, 7140, 7150, 7160, 7170, 7180, 7190, 7200, 7210, 7220, 7230, 7240, 7250, 7260, 7270, 7280, 7290, 7300, 7310, 7320, 7330, 7340, 7350, 7360, 7370, 7380, 7390, 7400, 7410, 7420, 7430, 7440, 7450, 7460, 7470, 7480, 7490, 7500, 7510, 7520, 7530, 754

KOLLER'S EXCAVATING & MATERIALS
KOLLER PIT
MINING PLAN MAP
DEC Permit #5-1542-00001/00001
Mine ID 50185
TOWN OF NORTH HUDSON, ESSEX COUNTY, NEW YORK
USGS 7.5-minute QUADRANGLE: ESSEX
Contour Interval: 5 foot
Datum: NAD 1983 SPCS New York East
Prepared By: Alpha Geoscience



LEGEND

Koller Property Boundary

Internal Property Lines

Approved Life of Mine (LOM)

Proposed LOM

Limit of Proposed Excavation

Mining Phase Boundaries

Residential Buildings

Commercial Buildings

A-A'

Cross Section Lines

Intermittent Stream (with 60' buffer)

Neighboring Property Line

Proposed Reclamation Benches

NYS 1m DEM - 5' Contours

Paved Road

Unpaved Road

Haul Road

Access Road

Surveyed Wetland (with 100' buffer)

Streams & River

NOTES

- Site topography derived from high resolution (1 meter) bare-earth digital elevation model (DEM) generated by the NYS Geospatial Services in 2019 (<https://gis.ny.gov/nys-dem>)

REVISIONS

Date	Description	By
4/7/2025	Map prepared	NRS
6/9/2025	NIPA edits - LOE moved to ridgeline	NRS
6/26/2025	NIPA 2 edits - Add sections F-F' & G-G'	NRS

KOLLER'S EXCAVATING & MATERIALS

KOLLER PIT

RECLAMATION PLAN MAP

DEC Permit #5-1542-00001/00001

Mine ID 50185


TOWN OF NORTH HUDSON, ESSEX COUNTY, NEW YORK

USGS 7.5-minute QUADRANGLE: ESSEX

Contour Interval: 5 foot

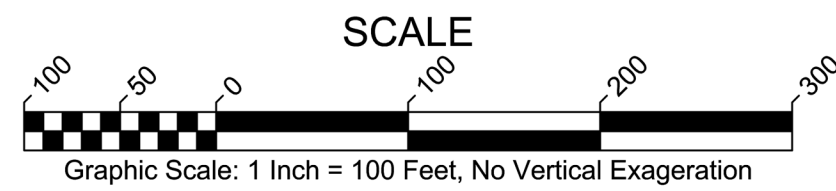
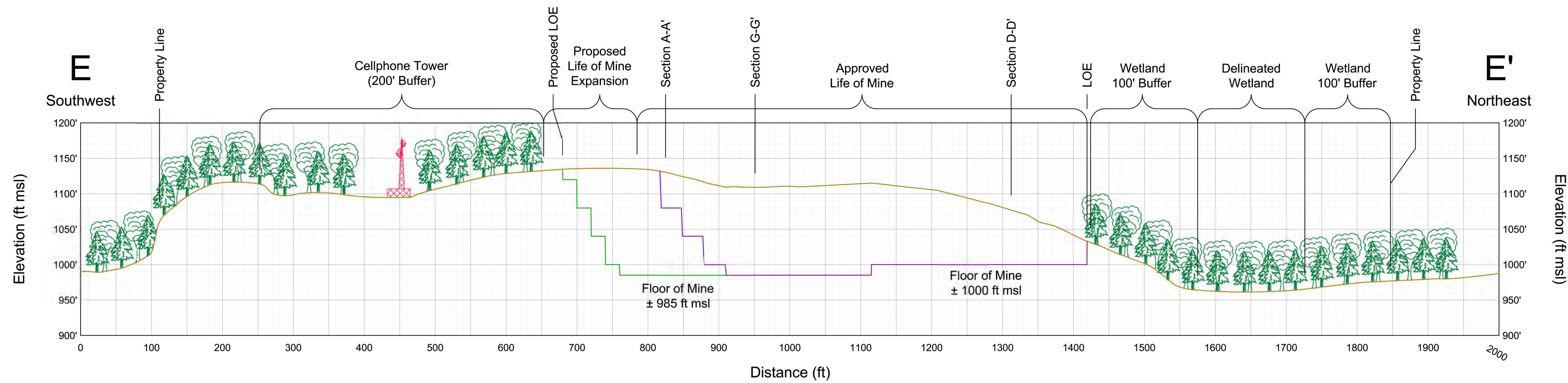
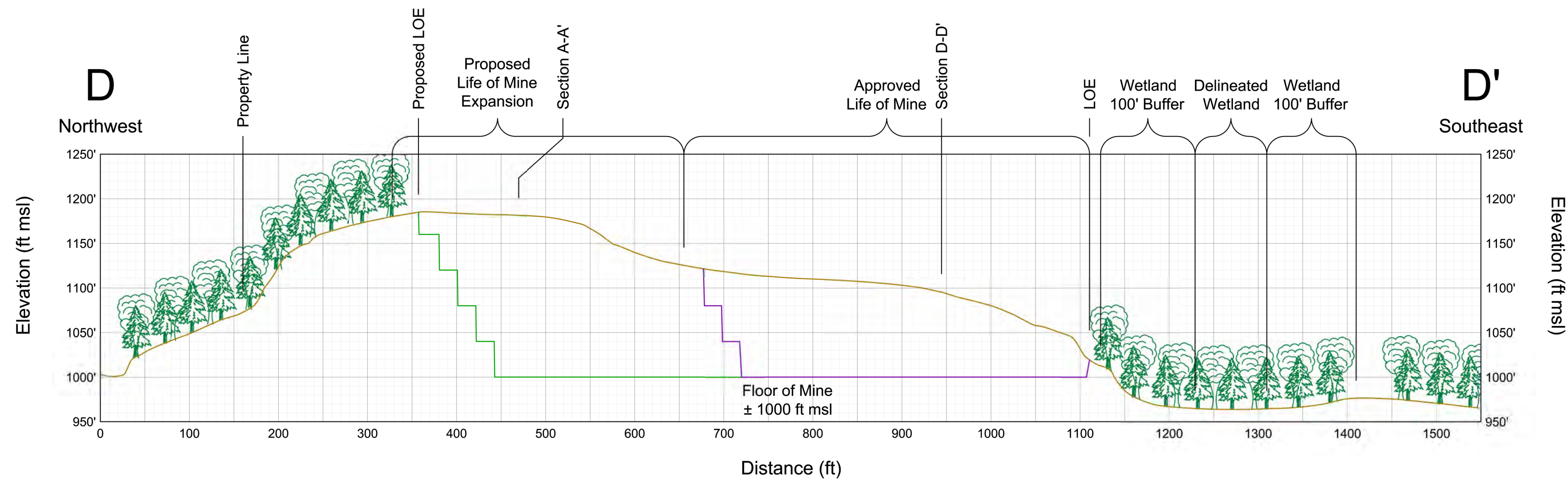
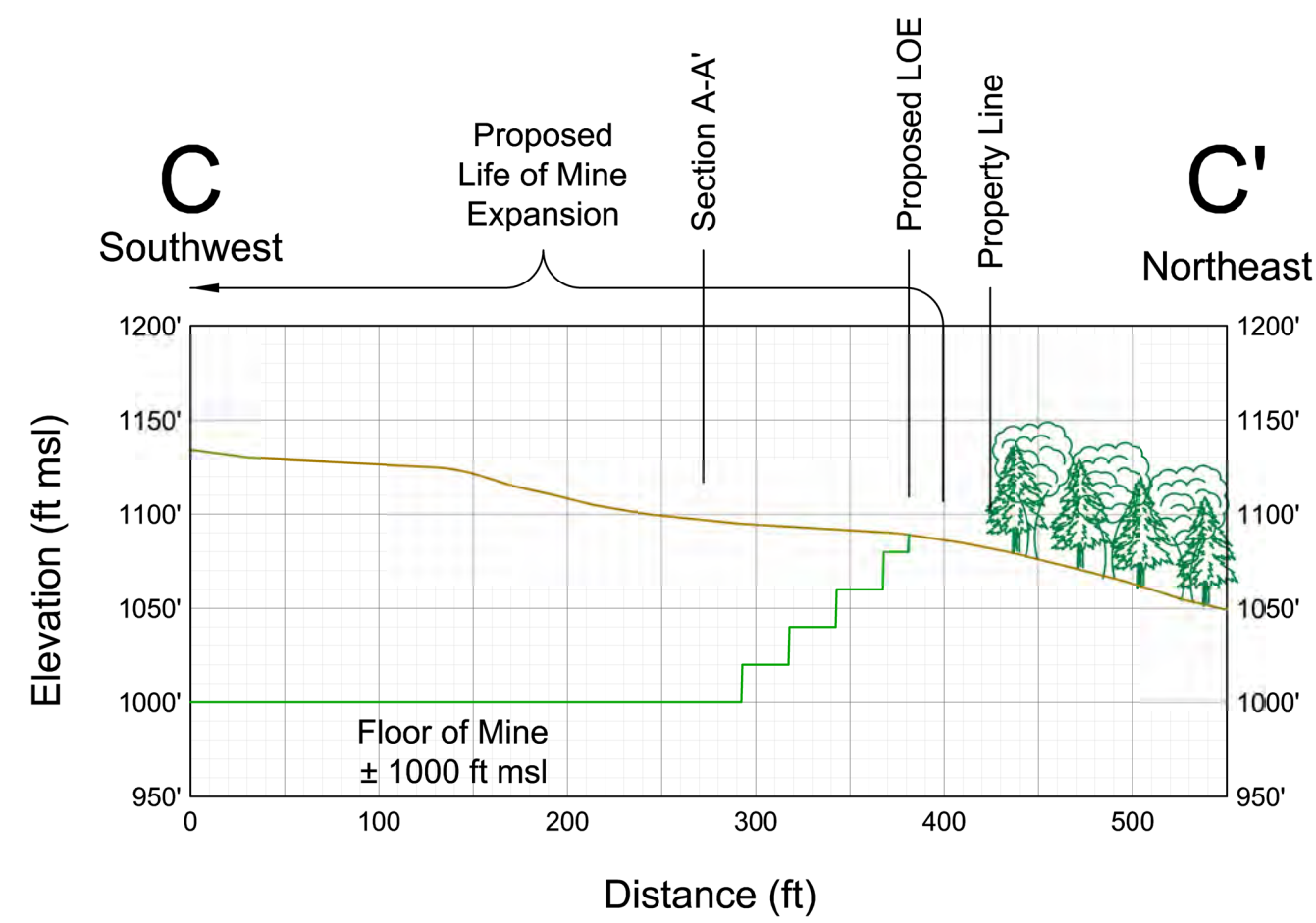
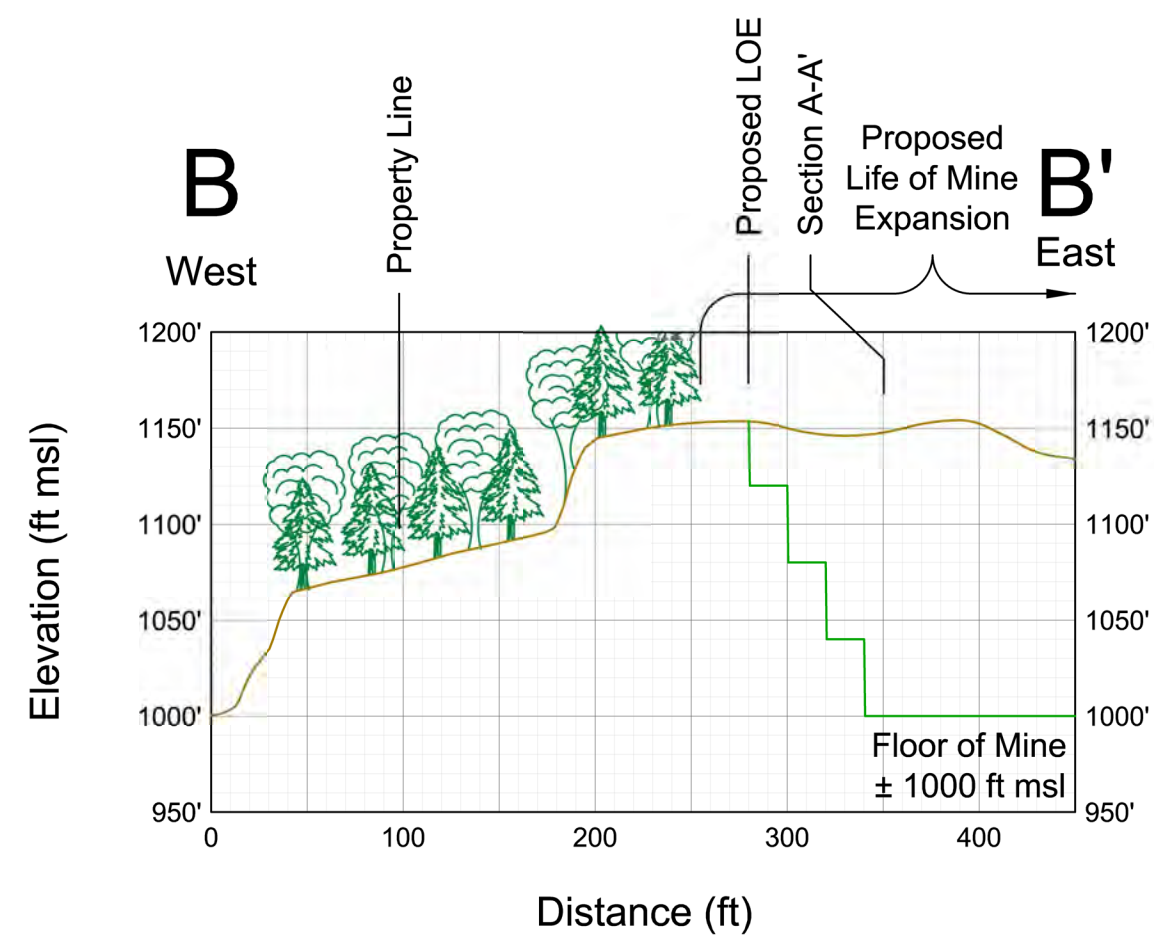
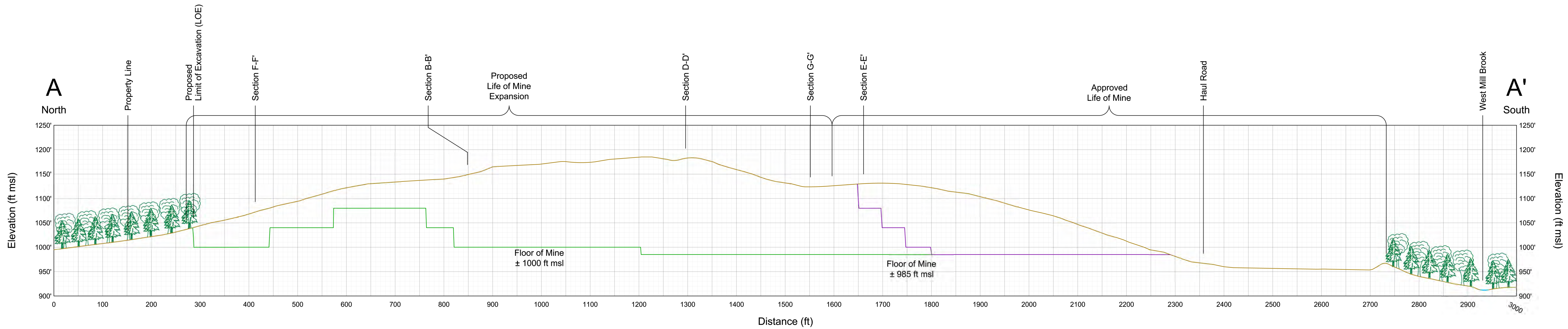
Datum: NAD 1983 SPCS New York East

Prepared By: Alpha Geoscience



ALPHA
GEOSCIENCE
Project No. 25109

Z:\projects\2025\25100 - 25199\25109 - Koller Excavating\15_0 GIS\Data\CAD\Koller Excavation Plans & Sections_6-26-2025.dwg,RPM, last saved: 06/26/2025, 08:55 AM



LEGEND

- Current Topography
- Proposed Reclamation Benching
- Approved Reclamation Benching

NOTES

- Site topography derived from high resolution (1 meter) bare-earth digital elevation model (DEM) generated by the NYS Geospatial Services in 2019 (<https://gis.ny.gov/nys-dem>)
- Deciduous trees depicted in the cross sections are approximately 70ft tall. Coniferous trees depicted in the cross sections are approximately 60ft tall.

REVISIONS

Date	Description	By
4/7/2025	Sections prepared	NRS
6/9/2025	NIPA edits - LOE moved to ridgeline	NRS
6/26/2025	NIPA 2 edits - Add sections F-F' & G-G'	NRS

KOLLER'S EXCAVATING & MATERIALS KOLLER PIT RECLAMATION CROSS SECTIONS - PLATE 1 DEC Permit #5-1542-00001/00001

Mine ID 50185

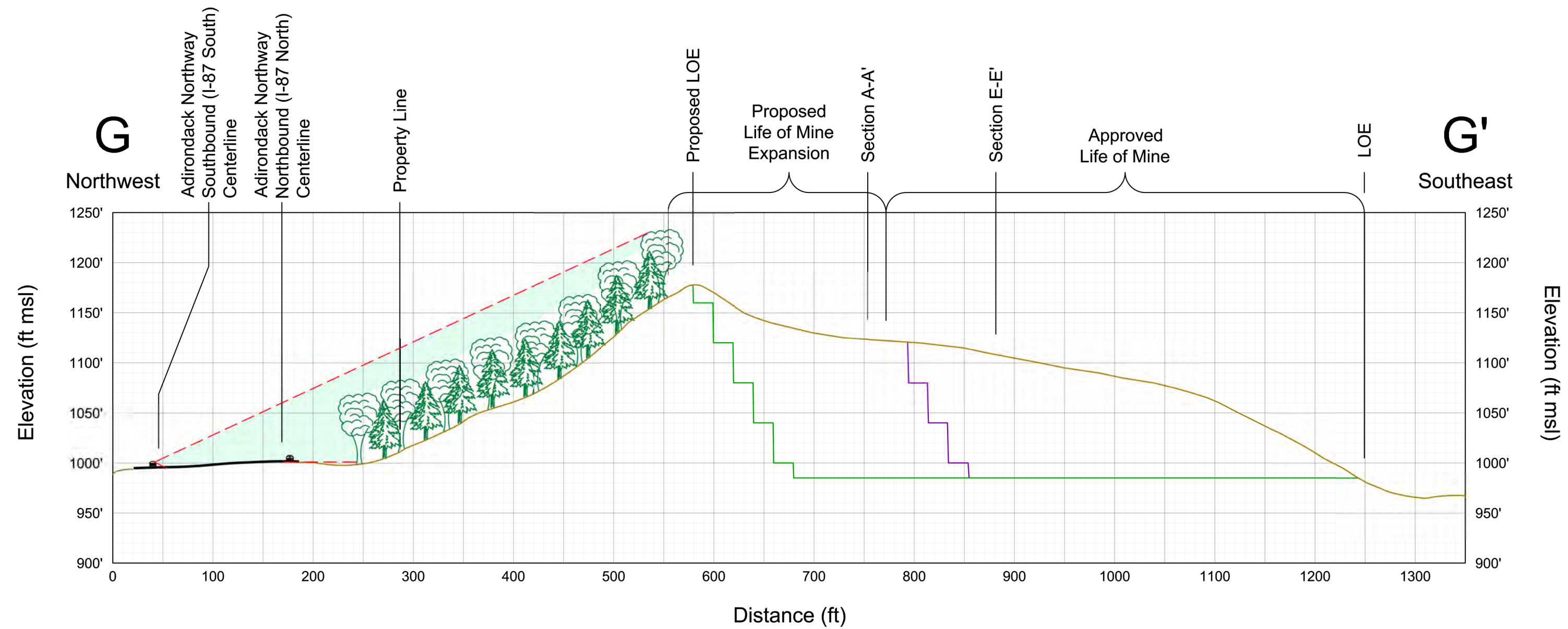
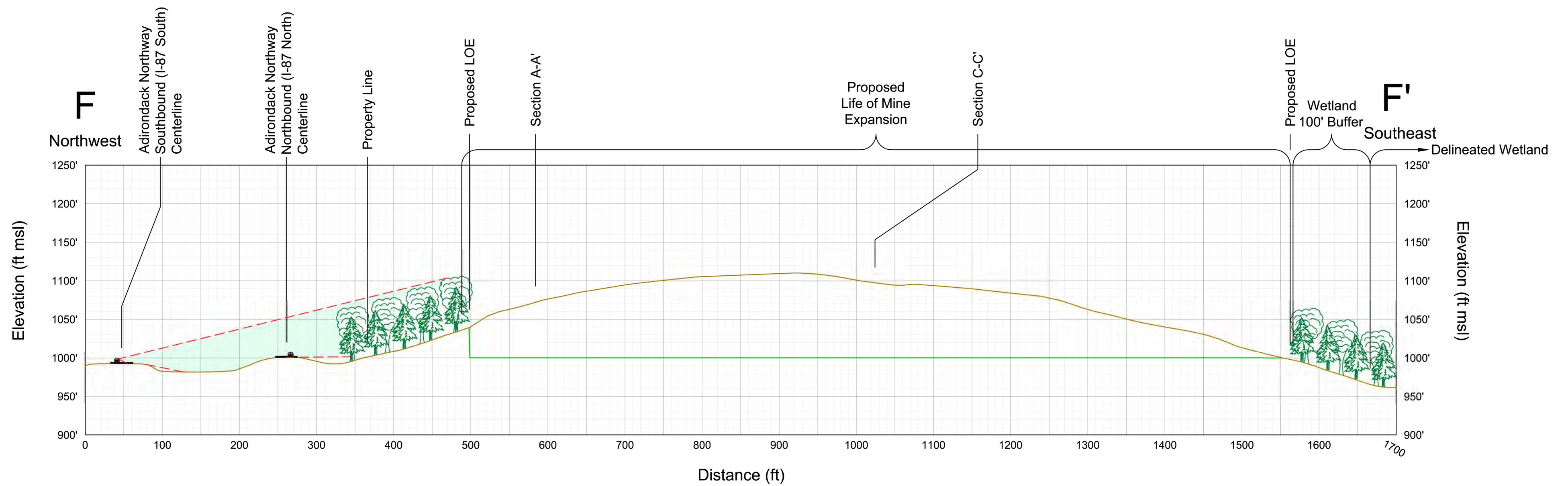
TOWN OF NORTH HUDSON, ESSEX COUNTY, NEW YORK

USGS 7.5-minute QUADRANGLE: ESSEX

Datum: NAD 1983 SPCS New York East

Prepared By: Alpha Geoscience





LEGEND

- Current Topography
- Proposed Reclamation Benching
- Approved Reclamation Benching
- Line of Sight
- Field of View

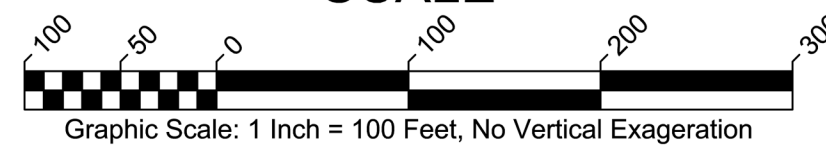
NOTES

- Site topography derived from high resolution (1 meter) bare-earth digital elevation model (DEM) generated by the NYS Geospatial Services in 2019 (<https://gis.ny.gov/nys-dem>)
- Deciduous trees depicted in the cross sections are approximately 70ft tall. Coniferous trees depicted in the cross sections are approximately 60ft tall.

REVISIONS

Date	Description	By
4/7/2025	Sections prepared	NRS
6/9/2025	NIPA edits - LOE moved to ridgeline	NRS
6/26/2025	NIPA 2 edits - Add sections F-F' & G-G'	NRS

SCALE



KOLLER'S EXCAVATING & MATERIALS KOLLER PIT RECLAMATION CROSS SECTIONS - PLATE 2 DEC Permit #5-1542-00001/00001

Mine ID 50185
TOWN OF NORTH HUDSON, ESSEX COUNTY, NEW YORK
USGS 7.5-minute QUADRANGLE: ESSEX
Datum: NAD 1983 SPCS New York East
Prepared By: Alpha Geoscience

